



gehealthcare.com

# SmartScore 4.0


## Quick Reference Guide

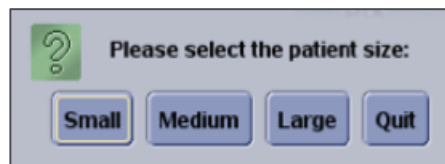
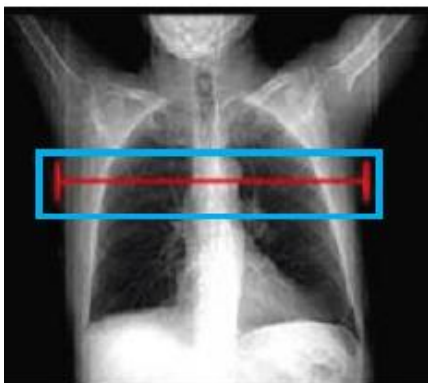
SmartScore is a non-invasive software option that can be used to evaluate calcified plaques in the coronary arteries and may be used to monitor the progression/regression of calcium in coronary arteries over time.

### Non-contrast acquisition, ECG synchronized

- **Axial slices:** 2.5 mm
- **SFOV:** Large Body - 120 kV
- **mA:** Please refer to the User Manual for the correct mA settings.
- **Scan type:** Cine or Cardiac (for Revolution CT only)
- **DFOV Fixed:** 25 cm
- **Kernel:** Standard
- **ASiR™:** 50%

### Load images in SmartScore Software

- Load the non-contrast series directly in SmartScore  or click on Volume Viewer, Cardiac, Smart Score.
- Select **patient size**. Measure patient width, skin to skin on AP scoutview



< 30 cm: Small  
30 – 38 cm: Medium  
> 38 cm: Large



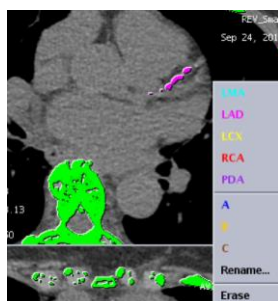
- **Patient Study:** ID, birthdate, name fields are filled automatically. Age and sex have to be entered.



- **Analyze:** Automatic calcium detection appears in green on images if **Auto Detect** Lesions has a check mark in the check box (pixels > 130 HU).



- **Freehand:** Circle lesions with left click hold, then release left click and choose vessel name. Repeat on each image with lesion.

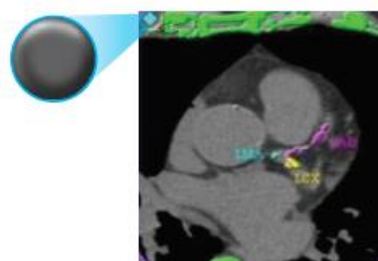


OR



- **Colored Cube:** Click on calcification, choose name, system will propagate to several slices. All the connected pixels will be identified on every slice.

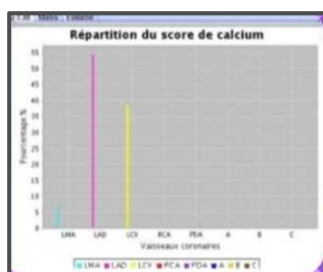
Click on this icon on the top of left corner for images of interest to include them into the report.



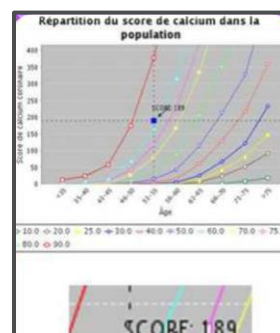
- **Report:** Click on **Send** to save the report in Patients List

CORONAIRE		Niveau
Score total		Score total
(LMA) Tronc de l'artère gauche		Coronaire
Lésion6		Lésion
Lésion7		Lésion
Lésion8		Lésion
(LAD) Interventriculaire antérieure		Coronaire

**1st graph:** Patient Score in the form of a calculation sheet.



**2nd graph:** Vessel Score Distribution by percentage.



**3rd graph:** Patient's total AJ-130 Score. Finds the patient percentile rank.



### **imagination at work**

2019 General Electric Company – All rights reserved.

General Electric Company reserves the right to make changes in specifications and features shown herein, or discontinue the product described at any time without notice or obligation.

**Notice:** The materials contained in this document are intended for educational purposes only. This document does not establish specifications, operating procedures or maintenance methods for any of the products referenced. Always refer to the official written materials (labeling) provided with the product for specifications, operating procedures and maintenance requirements. Specifications are subject to change.

All patient names or other protected health information or data contained in any image within this material is fictitious. Any similarity to actual persons is coincidental.